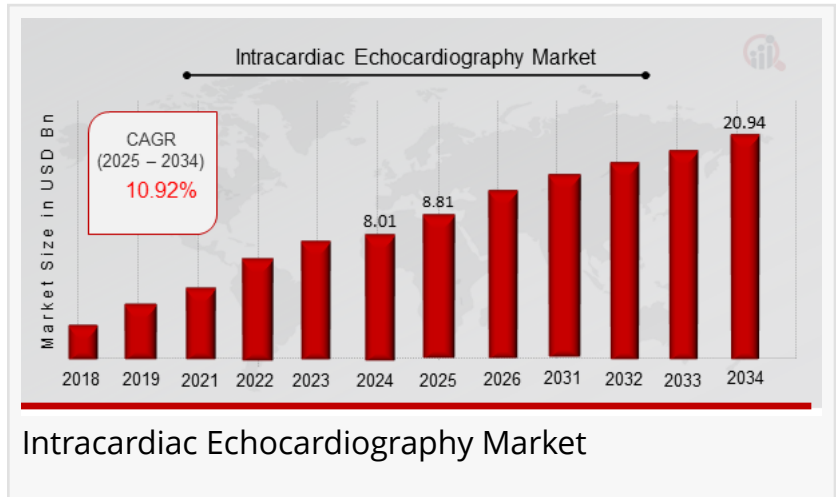


Intracardiac Echocardiography Market Set to Reach USD 16.58 Billion, with a Healthy 13.20% CAGR Till Forecasts 2034

Cardiovascular diseases (CVDs) remain a leading cause of global mortality, demanding sophisticated diagnostic and interventional tools.

US, NY, UNITED STATES, March 19, 2025 /EINPresswire.com/ -- Intracardiac Echocardiography Market Overview: A Window into the Heart's Dynamics

Intracardiac Echocardiography Market Overview



The [Intracardiac Echocardiography Market Size](#) was estimated at 8.01 (USD Billion) in 2024. The Intracardiac Echocardiography Market Industry is expected to grow from 8.81 (USD Billion) in 2025 to 20.94 (USD Billion) till 2034, at a CAGR (growth rate) is expected to be around 10.09% during the forecast period (2025 - 2034). The Intracardiac Echocardiography (ICE) Market is experiencing robust growth, driven by the increasing complexity of cardiac interventions and the rising demand for minimally invasive procedures. The ICE Market, valued significantly in 2024, is projected to expand at a healthy CAGR throughout the forecast period from 2025 to 2034. Key drivers include the escalating need for real-time, high-resolution cardiac imaging during intricate procedures, the growing adoption of electrophysiology (EP) procedures, and continuous technological advancements enhancing precision and efficiency.

Navigating Cardiovascular Complexity: ICE as a Critical Tool

Cardiovascular diseases (CVDs) remain a leading cause of global mortality, demanding sophisticated diagnostic and interventional tools. ICE has become indispensable, providing clinicians with real-time visualization of cardiac structures during complex procedures. These include atrial fibrillation (AFib) ablation, structural heart interventions such as transcatheter aortic valve replacement (TAVR) and mitral valve repair, and the correction of congenital heart defects. The ability to precisely delineate cardiac anatomy and guide interventions with unparalleled accuracy is fueling the widespread adoption of ICE technology. The growing

prevalence of CVDs, coupled with the increasing complexity of interventional procedures, is a major catalyst for market expansion.

Key Players Shaping the Intracardiac Echocardiography Landscape:

Argon Medical Devices, Inc.
Philips Healthcare
Edwards Lifesciences
Johnson Johnson
Boston Scientific
BD
Spectranetics
Medtronic
Terumo Corporation
Jude Medical
Siemens Healthineers
Integra Lifesciences Holdings Corporation
GE Healthcare
Abbott

□ Sample Copy of the Report

<https://www.marketresearchfuture.com/reports/intracardiac-echocardiography-market-30220>

Technological Innovations: Driving the Evolution of ICE

Technological advancements are revolutionizing the capabilities of ICE systems. High-frequency ultrasound transducers, miniaturized catheter designs, and sophisticated image processing algorithms are significantly enhancing image quality and procedural efficiency. The emergence of 4D ICE technology, which delivers real-time volumetric imaging, is expanding the scope of ICE in complex cardiac interventions, enabling clinicians to visualize intricate anatomical structures with unprecedented clarity. The seamless integration of ICE with EP systems and robotic-assisted platforms is further accelerating market growth, facilitating more precise and efficient procedures. These technological breakthroughs are redefining the boundaries of cardiac intervention.

Personalized Medicine and Minimally Invasive Procedures: ICE's Role

The increasing emphasis on personalized medicine and minimally invasive procedures is a key driver of the ICE market's growth. ICE provides real-time, detailed visualization of cardiac anatomy, enabling physicians to tailor interventions to the unique anatomical and pathological characteristics of each patient. This level of precision is particularly crucial in complex procedures like structural heart repairs and EP studies, where accurate visualization is essential

for optimal outcomes. Moreover, ICE minimizes radiation exposure and reduces the need for general anesthesia, enhancing patient comfort and safety. This focus on personalized precision is a significant factor in the growing demand for ICE-guided interventions.

Addressing Challenges and Capitalizing on Opportunities

While the future of ICE is promising, certain challenges remain. The high cost of ICE systems and the need for specialized training can pose barriers to adoption, particularly in emerging markets. The complexity of interpreting ICE images and the potential for device-related complications also present challenges. However, the medical community is actively addressing these issues. Researchers are working to develop more cost-effective ICE systems, enhance training programs, and improve device safety. Ongoing innovations in catheter design, imaging algorithms, and integration with other technologies are aimed at mitigating these challenges and expanding the accessibility of ICE.

□ You Can Purchase Complete Report

https://www.marketresearchfuture.com/checkout?currency=one_user-USD&report_id=30220

Market Segmentation and Regional Insights:

Intracardiac Echocardiography Market Device Type Outlook

Catheter-based Intracardiac Echocardiography

Needle-based Intracardiac Echocardiography

Intracardiac Echocardiography Market Application Outlook

Structural Heart Disease Assessment

Valvular Heart Disease Assessment

Congenital Heart Disease Assessment

Other Cardiovascular Applications

Intracardiac Echocardiography Market Site of Procedure Outlook

Interventional Cardiology Labs

Electrophysiology Labs

Cardiac Surgery Suites

Intracardiac Echocardiography Market Imaging Modality Outlook

2D Intracardiac Echocardiography

3D Intracardiac Echocardiography

Intracardiac Echocardiography Market Regional Outlook

North America

Europe

South America

Asia Pacific

Middle East and Africa

Key Inquiries Addressed in this Intracardiac Echocardiography Market

Q: What is Intracardiac Echocardiography (ICE)?

A: ICE is a minimally invasive imaging technique that uses ultrasound to visualize the inside of the heart in real-time.

Q: What are the primary applications of ICE?

A: ICE is used in electrophysiology procedures, structural heart interventions, and diagnostic imaging.

Q: What are the benefits of using ICE compared to other imaging techniques?

A: ICE provides real-time, high-resolution images, minimizes radiation exposure, and allows for precise guidance during procedures.

Q: What are the challenges associated with ICE?

A: Challenges include the high cost of systems and the need for specialized training.

Q: Who are the major players in the ICE market?

A: Major players include Philips Healthcare, Boston Scientific, and Siemens Healthineers.

Q: What are the key trends driving the ICE market?

A: Key trends include 4D ICE technology, integration with EP systems, and catheter miniaturization.

Q: How is the ICE market segmented?

A: The market is segmented by product type, application, end-user, and region.

By providing real-time, high-resolution imaging, ICE is transforming cardiac care, enabling clinicians to deliver precise and effective treatments for a wide range of cardiovascular conditions.

Related MRFR Reports with Full Detailed Analysis:

Image Guided Therapy System Market: <https://www.marketresearchfuture.com/reports/image-guided-therapy-system-market-42938>

Immune Checkpoint Inhibitor Market: <https://www.marketresearchfuture.com/reports/immune-checkpoint-inhibitor-market-42958>

Immunocytokines Market: <https://www.marketresearchfuture.com/reports/immunocytokines-market-32327>

Immunohematology Market:
<https://www.marketresearchfuture.com/reports/immunohematology-market-42784>

Immunology Market: <https://www.marketresearchfuture.com/reports/immunology-market-30261>

Market Research Future

Market Research Future

+1 855-661-4441

[email us here](#)

Visit us on social media:

[Facebook](#)

[X](#)

[LinkedIn](#)

[YouTube](#)

This press release can be viewed online at: <https://www.einpresswire.com/article/795286821>

EIN Presswire's priority is source transparency. We do not allow opaque clients, and our editors try to be careful about weeding out false and misleading content. As a user, if you see something we have missed, please do bring it to our attention. Your help is welcome. EIN Presswire, Everyone's Internet News Presswire™, tries to define some of the boundaries that are reasonable in today's world. Please see our Editorial Guidelines for more information.

© 1995-2025 Newsmatics Inc. All Right Reserved.