

# BizzTech and Esri Partner to Transform Spatial Data Visualization in the Metaverse

*AI-Powered Metaverse Meets Advanced GIS for Next-Generation Spatial Intelligence*

AUSTIN, TX, UNITED STATES, February 27, 2025 /EINPresswire.com/ -- BizzTech, a leader in AI-powered metaverse solutions, proudly announces a strategic partnership with Esri, the world's foremost provider of Geographic Information System (GIS) software. This collaboration, forged through the Esri Startup Program, aims to revolutionize spatial data visualization, urban planning, and digital transformation through the metaverse.

**Pioneering the Future of GIS and the Metaverse**

The partnership brings together BizzTech's immersive metaverse technology and Esri's geospatial expertise to create real-time, AI-driven spatial intelligence ecosystems. This integration will enhance urban planning, smart city development, industrial monitoring, and interactive educational environments, redefining how governments, businesses, and researchers engage with geospatial data.

**Key Innovations & Industry Impact**

- Urban Metaverse: Next-generation smart city solutions, enabling immersive digital twins for infrastructure planning, disaster response, and community engagement.
- Industrial Metaverse: AI-powered monitoring for real-time operational efficiency, predictive



**Bridging the Physical and Digital Worlds:** A futuristic cityscape illuminated by neon blue lights represents the integration of AI-powered metaverse technology and advanced GIS solutions. This visual embodies BizzTech and Esri's partnership, revolutionizing

analytics, and sustainable energy management.

□ Educational Metaverse: Interactive, virtual learning experiences for geospatial sciences, environmental research, and climate modeling. By leveraging BizzTech's AI-driven visualization platform, organizations can now experience seamless integration with Esri's ArcGIS, bringing 3D geospatial modeling to life with photorealistic, immersive environments.

### Leadership Insight



The garden features a circular brick design, lush wildflowers, and a central metal sculpture, showcasing the power of AI-driven 3D modeling for urban planning and environmental design.

"By combining BizzTech's AI-powered metaverse technology with Esri's world-class geospatial solutions, we are setting a new standard for spatial data interaction," said Dirk Schmidt, CEO of BizzTech. "This partnership will empower organizations with unparalleled tools for decision-making and spatial intelligence."

“

By combining BizzTech's AI-powered metaverse technology with Esri's world-class geospatial solutions, we are setting a new standard for spatial data interaction.”

*Dirk Schmidt, Co-Founder & CEO BizzTech*

### What This Means for Businesses & Governments

The BizzTech-Esri partnership will facilitate cross-platform AI integration, immersive geospatial visualization, and predictive analytics, benefiting sectors such as:

- Government & Smart Cities – Improved public infrastructure planning, digital civic engagement, and sustainability initiatives.
- Industry & Energy – Enhanced real-time monitoring and operational efficiency for smart manufacturing and energy

management.

□ Academia & Research – Cutting-edge tools for geospatial data analysis, climate studies, and environmental simulations.

### About BizzTech

BizzTech is a cutting-edge AI-powered metaverse platform, delivering immersive, data-driven digital transformation solutions. By integrating advanced spatial analytics, photorealistic 3D environments, and AI-driven insights, BizzTech helps organizations optimize operations in both physical and virtual spaces.

Jason Shuster

BizzTech

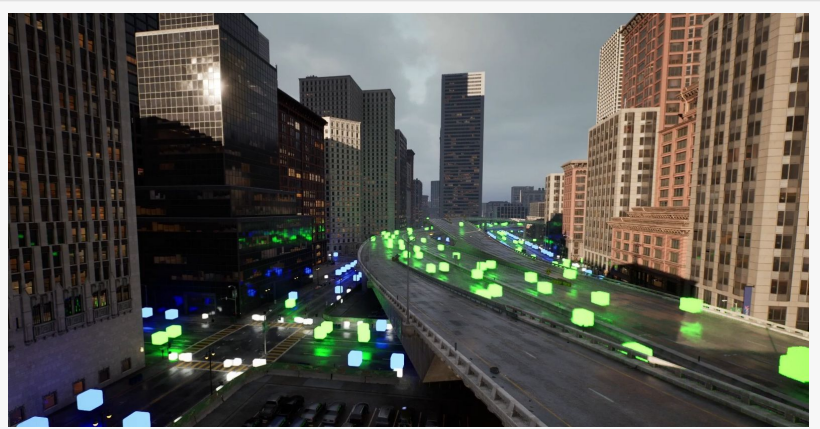
contact@bizztech.io

Visit us on social media:

[Facebook](#)

[LinkedIn](#)

[YouTube](#)



A high-resolution visualization of an urban highway surrounded by tall buildings, enhanced with digital overlays of glowing green and blue data cubes. These data points represent AI-powered traffic analytics, illustrating real-time monitoring and predicti

---

This press release can be viewed online at: <https://www.einpresswire.com/article/788993144>

EIN Presswire's priority is source transparency. We do not allow opaque clients, and our editors try to be careful about weeding out false and misleading content. As a user, if you see something we have missed, please do bring it to our attention. Your help is welcome. EIN Presswire, Everyone's Internet News Presswire™, tries to define some of the boundaries that are reasonable in today's world. Please see our Editorial Guidelines for more information.

© 1995-2025 Newsmatics Inc. All Right Reserved.