

Introducing 'Mesothelioma: We Can Help' —A Comprehensive Resource for Those Affected by Asbestos-Related Lung Disease

Mesothelioma: We Can Help is a new resource offering support, treatment info, and legal guidance for those affected by asbestos-related diseases.

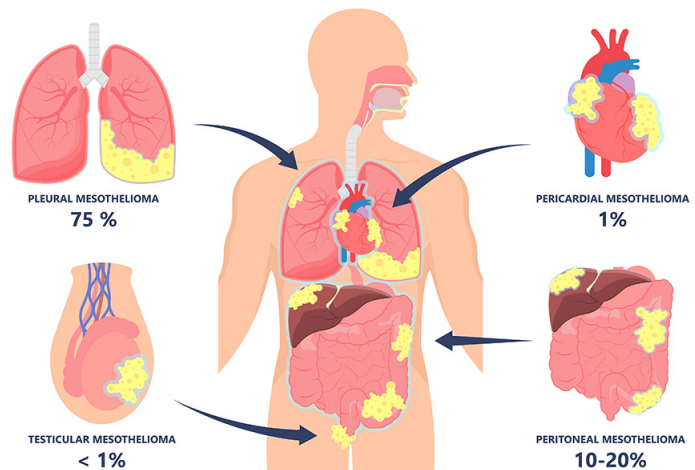
UNITED STATES, August 15, 2024 /EINPresswire.com/ -- [Mesothelioma](https://www.mesothelioma.com/) is a rare but aggressive form of cancer primarily caused by exposure to asbestos, a toxic mineral once commonly used in construction, manufacturing, and other industries. It affects the lining of the lungs, abdomen, or heart, often taking decades to develop after initial exposure. Tragically, many individuals who develop mesothelioma were unknowingly exposed to asbestos in their workplaces, homes, or communities.

Mesothelioma: We Can Help offers invaluable support by providing clear, accurate information about the disease, its symptoms, and treatment options. It serves as a critical resource for those diagnosed with mesothelioma and their loved ones, helping them navigate the complexities of the disease and access essential medical, legal, and emotional support services. This website is especially vital for those who might have been



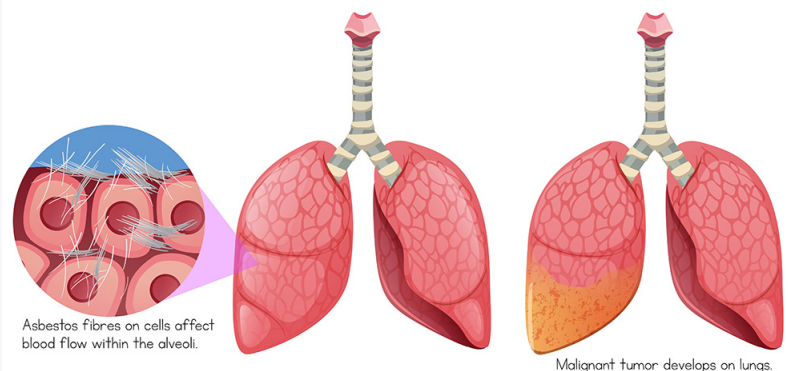
Mesothelioma We Can Help Logo

MESOTHELIOMA TYPES



Types of Mesothelioma

Process of mesothelioma cause from asbestos



Progression of Mesothelioma

unknowingly exposed to asbestos, offering guidance on early detection, available treatments, and legal rights to pursue compensation.

This website is designed as an educational resource to empower patients and families by guiding them through every step of their journey—from diagnosis to treatment and beyond.

Key Features of the Website Include:

Educational Content: In-depth explanations of mesothelioma and other asbestos-related conditions, ensuring that patients and their families have the necessary information to make informed decisions about their care.

Treatment Guidance: Information on the latest treatment options, including surgery, chemotherapy, and emerging therapies, to help patients explore all available avenues for their care.

Doctor & Treatment Center Directory: A searchable directory of [mesothelioma doctors](#) and treatment centers, enabling patients to easily locate and contact specialists and clinics near them.

Support Resources: Access to a wide range of support services, including counseling and patient advocacy, to help individuals cope with the emotional and physical challenges of mesothelioma.

Legal Assistance: Guidance on understanding legal rights and pursuing compensation for those affected by asbestos exposure, including connecting victims with experienced [mesothelioma attorneys](#).

Mesothelioma: We Can Help is more than just a website—it's a lifeline for those grappling with the realities of mesothelioma. This platform combines expert knowledge, compassionate support, and practical tools to empower patients and their families as they navigate this devastating disease.

This vital resource is sponsored by Lipsitz, Ponterio, & Comerford, LLC, a leading personal injury law firm based in Buffalo, NY. With decades of experience advocating for the rights of asbestos exposure victims, their commitment to providing comprehensive legal support has made them a trusted ally in the mesothelioma community.

For more information, visit www.mesotheliomawecanhelp.com.

Geron Evanson
Veritas Law Firm Marketing
+1 716-601-1185

[email us here](#)

This press release can be viewed online at: <https://www.einpresswire.com/article/735809948>

EIN Presswire's priority is source transparency. We do not allow opaque clients, and our editors try to be careful about weeding out false and misleading content. As a user, if you see something we have missed, please do bring it to our attention. Your help is welcome. EIN Presswire, Everyone's Internet News Presswire™, tries to define some of the boundaries that are reasonable in today's world. Please see our Editorial Guidelines for more information.

© 1995-2024 Newsmatics Inc. All Right Reserved.