

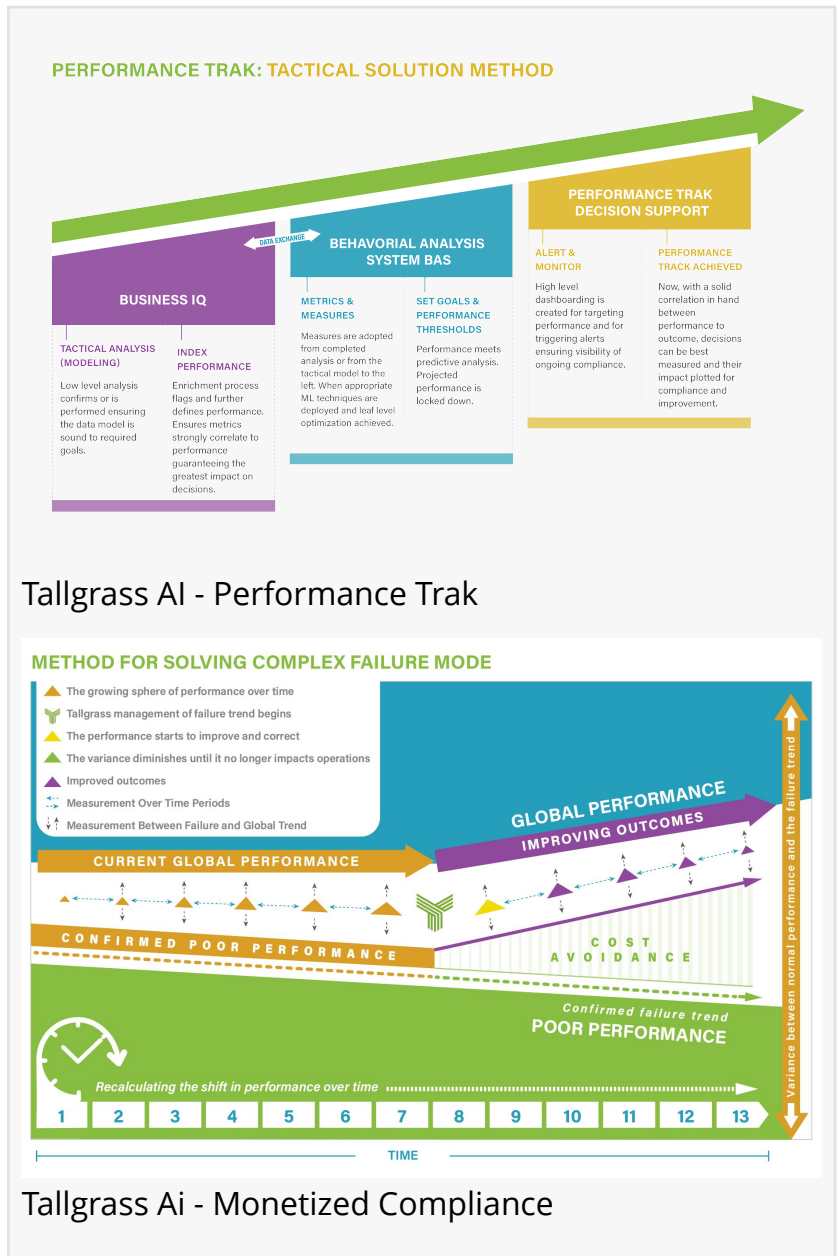
Tallgrass Solutions and its Advanced Generative AI Chatbot Module to Enhance Client Support and Operational Efficiency

SANTA CLARITA, CA, UNITED STATES, August 12, 2024 /EINPresswire.com/ -- Tallgrass Solutions is excited to announce the launch of its generative AI chatbot module, a significant enhancement to its service offerings. This advanced chatbot leverages natural language processing (NLP) to provide real-time, intelligent support to clients, streamlining the RMA (Return Merchandise Authorization) process and offering insightful recommendations for optimizing reverse logistics.

The introduction of this cutting-edge technology underscores Tallgrass Solutions' commitment to innovation and customer satisfaction. By integrating the generative AI chatbot into its platform, Tallgrass ensures that clients receive immediate, accurate assistance, enhancing their overall experience and operational efficiency.

“Our new AI chatbot represents a major step forward in our mission to provide exceptional support and innovative solutions to our clients,”

said Michael Beale, Managing Partner at Tallgrass Solutions. “This technology allows us to offer unparalleled real-time assistance, helping our clients navigate the complexities of RMA and reverse logistics with ease.”



Tallgrass AI - Performance Trak

Tallgrass Ai - Monetized Compliance

Key features of the generative AI chatbot module include:

- 1) Real-Time Support: The AI chatbot is available 24/7, providing instant responses to customer inquiries and ensuring that clients receive timely support regardless of location or time zone.
- 2) Natural Language Processing: Utilizing advanced NLP, the chatbot understands and interprets customer queries accurately, enabling seamless interactions and efficient problem resolution.
- 3) Streamlined RMA Process: The chatbot assists in managing the RMA process, guiding customers through each step, from initiating returns to tracking their status, thereby reducing the time and effort required from both clients and support teams.
- 4) Optimized Reverse Logistics: By analyzing customer data and providing actionable insights, the chatbot helps organizations optimize their reverse logistics operations, identifying opportunities for cost savings and process improvements.
- 5) Intelligent Recommendations: The AI chatbot offers personalized recommendations based on historical data and current trends, aiding clients in making informed decisions to enhance their logistics strategies.

The generative AI chatbot module is designed to integrate seamlessly with Tallgrass Solutions' existing platform, ensuring a cohesive user experience. By automating routine tasks and providing intelligent support, the chatbot allows clients to focus on their core operations while benefiting from improved efficiency and reduced operational costs.

Key benefits of the generative AI chatbot include:

- 1) RMA Reduction: The chatbot streamlines and simplifies the RMA process, resulting in fewer return requests and improved customer satisfaction.
- 2) IW NFF Reduction: By providing accurate and timely information, the chatbot helps reduce the incidence of "No Fault Found" (NFF) issues, saving time and resources.
- 3). Instant Quantifiable Cost: Clients receive immediate, quantifiable cost information for returns and logistics operations, enabling better financial decision-making.
- 4) Always a Great Update on the State of the Unit: The chatbot ensures clients always have up-to-date information on the status of their units, enhancing transparency and trust.
- 5) Predefined Work Order to "de-manufacture" a Device: The chatbot provides predefined work orders for device de-manufacturing, streamlining the process and ensuring compliance with industry standards.

"Our clients trust us to deliver innovative solutions that drive their success," added Michael Beale.

"With the introduction of our AI chatbot, we are enhancing our ability to support them in real-time, providing the insights and assistance they need to stay ahead in a competitive market."

For more information about Tallgrass Solutions and its generative AI chatbot module, please visit <https://tallgrass.ai>.

About

Tallgrass Solutions Tallgrass Solutions is a pioneering company specializing in RMA and reverse logistics optimization. Leveraging advanced AI and machine learning technologies, Tallgrass delivers tailored solutions that help organizations streamline their return processes, reduce costs, and enhance customer satisfaction. With a strong focus on sustainability and the circular economy, Tallgrass Solutions guides clients in implementing practices that minimize waste and maximize resource efficiency.

Ralph Sijl

Tallgrass Solutions

ralph@tallgrass.ai

This press release can be viewed online at: <https://www.einpresswire.com/article/734925037>

EIN Presswire's priority is source transparency. We do not allow opaque clients, and our editors try to be careful about weeding out false and misleading content. As a user, if you see something we have missed, please do bring it to our attention. Your help is welcome. EIN Presswire, Everyone's Internet News Presswire™, tries to define some of the boundaries that are reasonable in today's world. Please see our Editorial Guidelines for more information.

© 1995-2024 Newsmatics Inc. All Right Reserved.